

## BASIC ETIQUETTE

---

### CELL PHONES OFF

#### SAFETY FIRST

Wait until group ahead is out of range before hitting, especially on green.

Avoid practice swings near other players

#### REPAIR DIVOTS

Replace grass and step on firmly. Use seed mix if available.

#### RAKE BUNKERS

Use rake to smooth footprints and depressions after bunker shots.

Enter and exit bunker at low side.

#### GOLF CARTS

Avoid rapid starts and stops, sharp turns and wet areas.

Avoid critical play areas, such as aprons of greens and banks immediately next to greens

Park pull carts 15-30 feet from greens.

#### PUTTING GREENS

Avoid walking on another player's line.

Mark your ball.

Flagstick stays in hole until everyone is one green, unless a player requests its removal. Remove flag by pulling straight up to avoid damage to cup.

Repair your ball marks and others as well.

## PACE OF PLAY

---

To help stay with the group ahead:

Develop a preshot routine to minimize practice swings.

Play ready golf—the player further away need not be the first to hit.

Search for your ball for a reasonable time only.

Hit a provisional ball if your shot appears OB or lost

Park carts on the side of the green closest to the next tee box.

If falling behind the group head, leave the green and head to the next tee immediately after putting out.

Pick up your ball if you've reached your stroke limit.

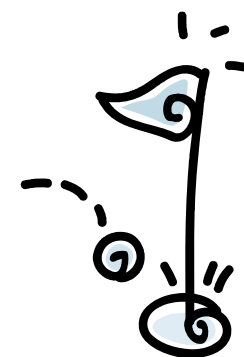
**NO POUTING!!**

**If you can't make your tee time, please let us know:**

Jefferson Park Golf Course  
Phone: 206-762-4512

Helen Landicho  
Phone: 425-260-0201  
E-mail: hlandicho@gmail.com

# SIMPLE GOLF RULES AND ETIQUETTE



**Jefferson Park  
Women's Golf Club  
Saturday Members**

# Simple Rules

## Teeing Off

Tee off between the tee-markers. You may not tee off in front of the markers, but you are allowed to tee off up to two club-lengths behind the front line of the tee-markers.

## Playing The Ball

Play the ball where it lies, except in ground under repair or if there is a man made obstruction in the flight path through to the green.

If your ball lies in a bunker or a water hazard, you are not allowed to ground your club before your down swing.

Playing the wrong golf ball will constitute a 2 stroke penalty.

## Putting Green

You are allowed to mark, lift and clean your ball on the putting green. You must replace your ball to the exact spot.

You should repair your ball marks on the green.

If the flag stick is left in the hole, and you are putting on the green surface, and the ball strikes the pin, you are assessed a 2 stroke penalty.

## Ball At Rest

If your ball is at rest and it is moved by you, your partner or your caddie, except as permitted by the Rules, or if it moves after you have addressed it, add a penalty stroke and replace your ball.

If your ball is at rest and is moved by someone else or another ball, replace it without penalty to you.

## Ball In Motion Deflected Or Stopped

Ball struck by you is deflected or stopped by you, your partner or your caddie - in match play you lose the hole; in stroke play you incur a **two-stroke penalty** and the ball is played as it lies.

Ball struck by you is deflected or stopped by someone else - play your ball as it lies without penalty, except (a) in match play, if an opponent or his caddie deflects the ball you have an option to replay the stroke or (b) in stroke play, if the ball is deflected after a stroke from on the putting green, you must replay it.

Ball struck by you is deflected or stopped by another ball at rest- in match play, no penalty and the ball is played as it lies except. In stroke play you incur a two-stroke penalty if your ball and the other ball were on the putting green before you played.

## Lifting, Dropping And Placing The Ball

If a lifted ball is to be replaced, its position must be marked. If a ball is to be dropped or placed in any other position (e.g. taking relief from GUR, etc.) it is recommended that the ball's original position be marked.

When dropping, stand erect, hold the ball at shoulder height and arm's length and drop it. If a dropped ball strikes you or your partner, caddie or equipment it must be re-dropped without penalty.

There are eight instances where a dropped ball rolls to such a position that it must be re-dropped - see Rules of Golf Rule 20 - 2c

## Loose Impediments

You may move a loose impediment, unless it and your ball are in a hazard. However, if you have touched a loose impediment within one club-length of your ball and your ball moves, the ball must be replaced and (unless your ball was on the putting green) you incur a penalty stroke.

## Obstructions

Movable obstructions (e.g. rakes, hoses, equipment etc.) anywhere on the course may be moved. If the ball moves it must be replaced without penalty.

If an immovable obstruction (e.g. sprinkler, fence) interferes with your stance or swing, you may drop the ball within one club-length of the nearest point of relief not nearer the hole.

## Casual Water, Ground Under Repair

If your ball is in casual water, ground under repair or a hole made by a burrowing animal, you may drop without penalty within one club-length of the nearest point of relief, not nearer the hole.

## Out Of Bounds or Lost Ball

If your ball is lost outside a water hazard or out of bounds you must play another ball from the spot where the last shot was played under penalty of one stroke, i.e. stroke and distance. You are allowed 5 minutes to search for a ball, after which if it is not found or identified it is lost. If, after playing a shot, you think your ball may be lost outside a water hazard or out of bounds you may play a 'provisional ball'. You must state that it is a provisional ball and play it before you go forward to search for the original ball. If the original ball is lost or out of bounds you must continue with the provisional ball under penalty of one stroke. If the original ball is not lost or out of bounds, you must continue play of the hole with it and the provisional ball must be abandoned.

## Unplayable Ball

If you believe your ball is unplayable outside a water hazard, you may under penalty of one stroke, (a) drop within two club-lengths of where the ball lies, not nearer the hole, (b) drop any distance behind the point where the ball lay, keeping a straight line between the hole, the point where the ball lay and the spot on which the ball is dropped, or (c) replay the shot. If your ball is in a bunker you may proceed under (a), (b) and (c). However, if you elect to proceed under (a) or (b) you must drop in the bunker.